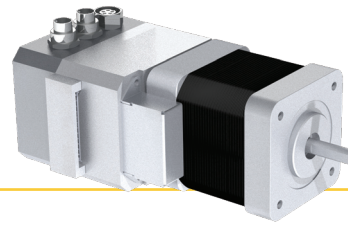


INTERFACE OPTIONS



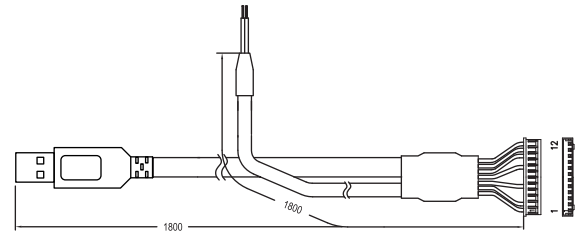
■ CM1 Series Interface Options

CM1US1 - 1800

CM1 motor	USB	Length in mm
-----------	-----	-----------------

- USB communications cable; CM1 Cool Muscle to PC via virtual COM port.
- 24AWG, 2 conductor power cable.
- Drivers available at www.coolmuscle.com

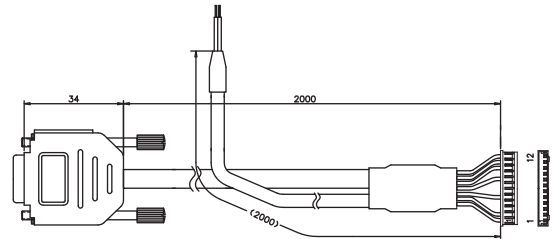
■ Dimensions: mm



CM1C3 - 2000

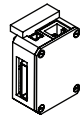
RS-232	Length in mm
--------	-----------------

- RS-232 communications cable; CM1 Cool Muscle to PC/Controller via DB9 connector.
- 24AWG, 2 conductor power cable.

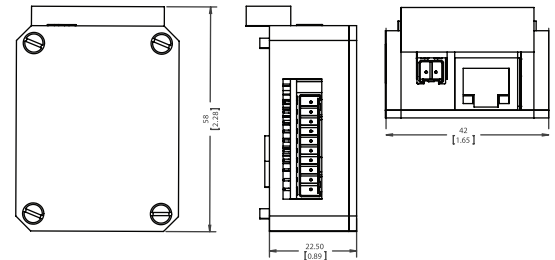


CM1-X-XXXXX- IPX

17S30/17L30	Ethernet
23S30/23L20	

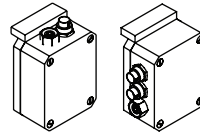


- TCP/IP communications option; CM1 Cool Muscle to PC/Controller via RJ45.
- Positive lock 2 pin 24Vdc power & 10 pin I/O & Daisy Chain connectors.
- Virtualized COM port driver available at www.coolmuscle.com.

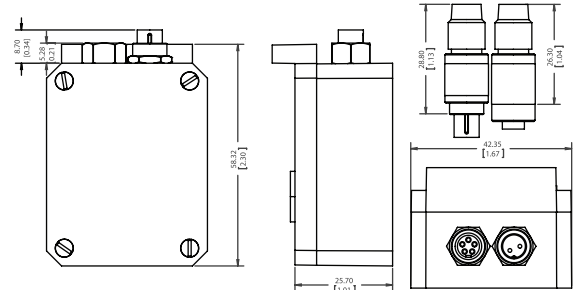


CM1-X-XXXXX- CAN 2

17S30/17L30	CANopen	2 Connector 3 Connector
23S30/23L20		



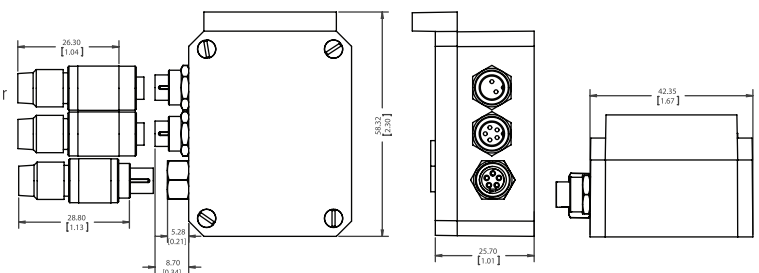
- CANopen communications option; CM1 Cool Muscle and CAN host.
- M9 connectors for power, communications and I/O.
- 2 connector option provides communications, power, Input 2 and Output 2.
- 3 connector option provides additional I/O access.

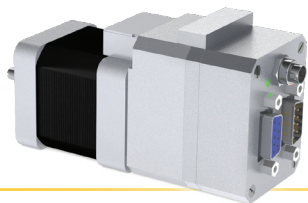


CM1-X-XXXXX- RBST 3 N

17S30/17L30	Robust Connectors	2 Connector 3 Connector 3N Daisy Chain Connector
23S30/23L20		

- Connector only option adds robust mechanical interface.
- Same M9 configuration as CAN Option.
- M9 connectors for power and I/O.
- 2 connector option provides power, Inputs 1 & 2, Outputs 1 & 2.
- 3 connector option provides additional I/O access.
- 3N option provides internal pull-up resistor for daisy chain networking.



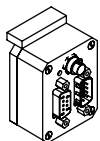


INTERFACE OPTIONS

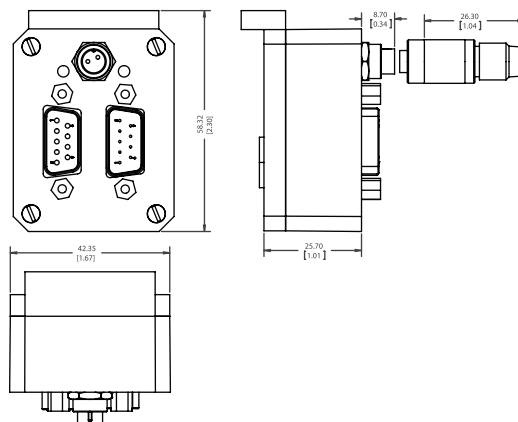
■ CM1 Series Interface Options

CM1-X-XXXXX-SRL

CM1 Series	17S30/17L30 23S30/23L20	RS-232
------------	----------------------------	--------



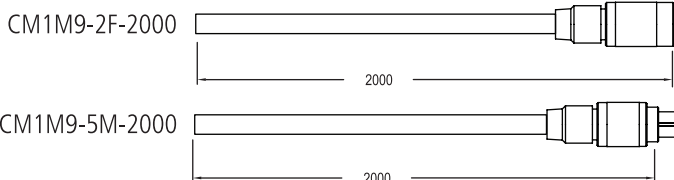
- RS-232 communications option, CM1 Cool Muscle and PC/Controller via DB9 connectors.
- Update to CM1DC1-MBS/SBS/CASE set. Jumper selectable host/secondary.
- Daisy chain network support and I/O access via DB9 connector.
- 24Vdc power via M9 connector.



■ M9 Cabling

CM1M9 - 2 F - 2000

M9	2 wire 5 wire	Female Male	Length mm 500~5000
----	------------------	----------------	-----------------------



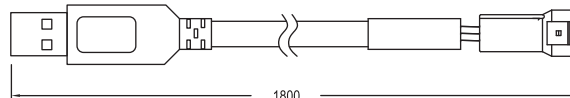
■ CM2 Series Interface Options

CM2US2 - 1800W

CM2 Series	USB	Length in mm	S Single ended W Double ended
------------	-----	-----------------	----------------------------------

- USB communications cable; CM2 Cool Muscle to PC via virtual COM port.
- Direct access available via DLL option.
- Drivers available at www.coolmuscle.com.

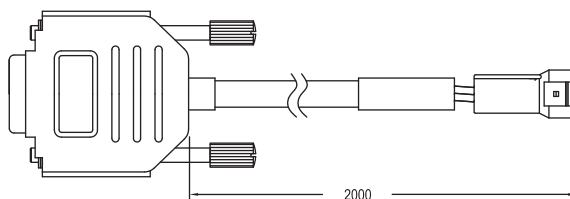
■ Dimensions: mm (+-5%)



CM2RS2 - 2000W

RS232	Length mm	S Single ended W Double ended
-------	--------------	----------------------------------

- RS-232 communications cable; CM2 Cool Muscle to PC/Controller via DB9 connector.
- 24AWG, 2 conductor power cable.



CM2DC2 - 2000W

Daisy Chain Network	Length mm	S Single ended W Double ended
---------------------------	--------------	----------------------------------

- Daisy Chain cable connecting CM2 Cool Muscle motors for networking.

